

# DATA PRODUK

## PRODUCT DATA MULTIPOX MX - 99

- Type : Two component polyamide cured epoxy enamel
- Color : As shown in the color card
- Finish : Glossy
- Solid by volume ( mixture ) : 60 %
- Specific gravity ( mixture ) : 1,2 gr/ml
- Theoretical coverage : 5,0 m<sup>2</sup>/ltset ( DFT = 100 m )
- Drying time : - Dust free = 30 minutes ( 30<sup>o</sup>C )  
- Touch free = 4 hours ( 30<sup>o</sup>C )  
- Hard dry = 10 hours ( 30<sup>o</sup>C )
- Flash point : 21<sup>o</sup>C
- Recoating interval : 6 - 24 hours ( 30<sup>o</sup>C )
- Pot life : 5 hours ( 30<sup>o</sup>C )
- Packaging : 1 ltset ( included thinner )
- Storage stability : One year if stored cool and dry and in original not opened cans  
( do not store below freezing point )



White



Light Grey



Light Alabaster



Traffic Yellow



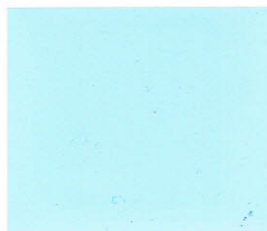
Beige



Pale Green



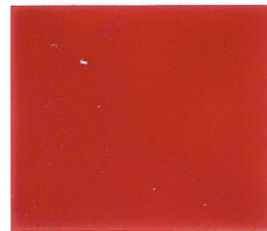
Leaf Green



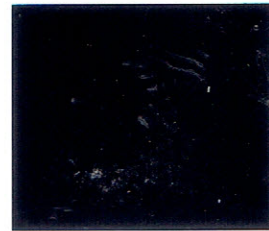
Light Blue



Gentian Blue



Geranium



Black